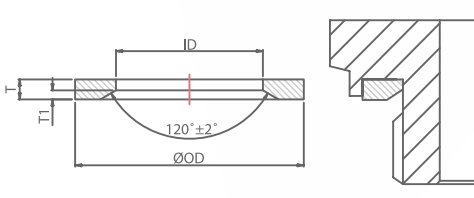


THREADED CONNECTOR



BS1 THREADED CONNECTOR SEAL

- Low leakage even when re-used.
- No twisting in the groove
- Compensation of manufacturing tolerances
- Seals can be refitted.
- Outstanding sealing action over long periods.



MATERIAL	NBR	FKM
Hardness(Shore A)	90	80
Color	Black	Green
Temperature Range (°C)	-30 to 100	-20 to 200

SIZE	THREAD (MM)	THREAD (INCH)	MEASUREMENTS IN MILLIMETERS					
			Ø ID	Ø OD	T	±	T1	±
8	M8 x 1.0		6.50	9.90	1.00	0.10	0.50	0.20
10	M10 x 1	G 1/8 A	8.40	11.90	1.00	0.10	0.50	0.20
12	M12 x 1.5	-	9.80	14.40	1.50	0.10	0.80	0.20
14	M14 x 1.5	G 1/4 A	11.60	16.50	1.50	0.10	0.80	0.20
16	M16 x 1.5	-	13.80	18.90	1.50	0.10	0.80	0.20
17	-	G 3/8 A	14.70	18.90	1.50	0.10	0.80	0.20
18	M18 x 1.5	-	15.70	20.90	1.50	0.10	0.80	0.20
20	M20 x 1.5	-	17.80	22.90	1.50	0.10	0.80	0.20
21	-	G 1/2 A	18.50	23.90	1.50	0.10	0.80	0.20
22	M22 x 1.5	-	19.60	24.30	1.50	0.10	0.80	0.20
24	M24 x 1.5	-	21.80	26.90	1.50	0.10	0.80	0.20
27	M26 x 1.5	G 3/4 A	23.90	29.20	1.50	0.10	0.80	0.20
27	M27 x 2.0	G 3/4 A	23.90	29.20	1.50	0.10	0.80	0.20
30	M30 x 1.5	-	27.70	32.70	2.00	0.10	0.80	0.20
33	M33 x 2.0	G 1 A	29.70	35.70	2.00	0.10	1.00	0.20
38	M38 x 1.5	-	35.90	43.20	2.40	0.10	1.00	0.20
42	M42 x 2.0	G 1 1/4 A	38.80	45.80	2.00	0.10	1.00	0.20
48	M48 x 2.0	G 1 1/2 A	44.70	50.70	2.00	0.10	1.00	0.20
60	M60 x 2.0	G 2 A	56.50	66.10	4.00	0.10	2.00	0.20